

# RIGID/FLEX SERIES



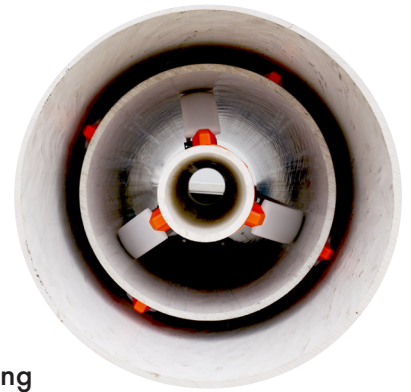
## APPLICATION

Instantly customisable casing spacers with very high pipe adhesion, used for slip lining and pipe centralizing in medium to heavyweight pipe-in-cavity installations. Compatible with all pipe materials including steel, DICL, MSCL, GRP, PVC and HDPE. Suitable for all diameters from 100mm and greater.

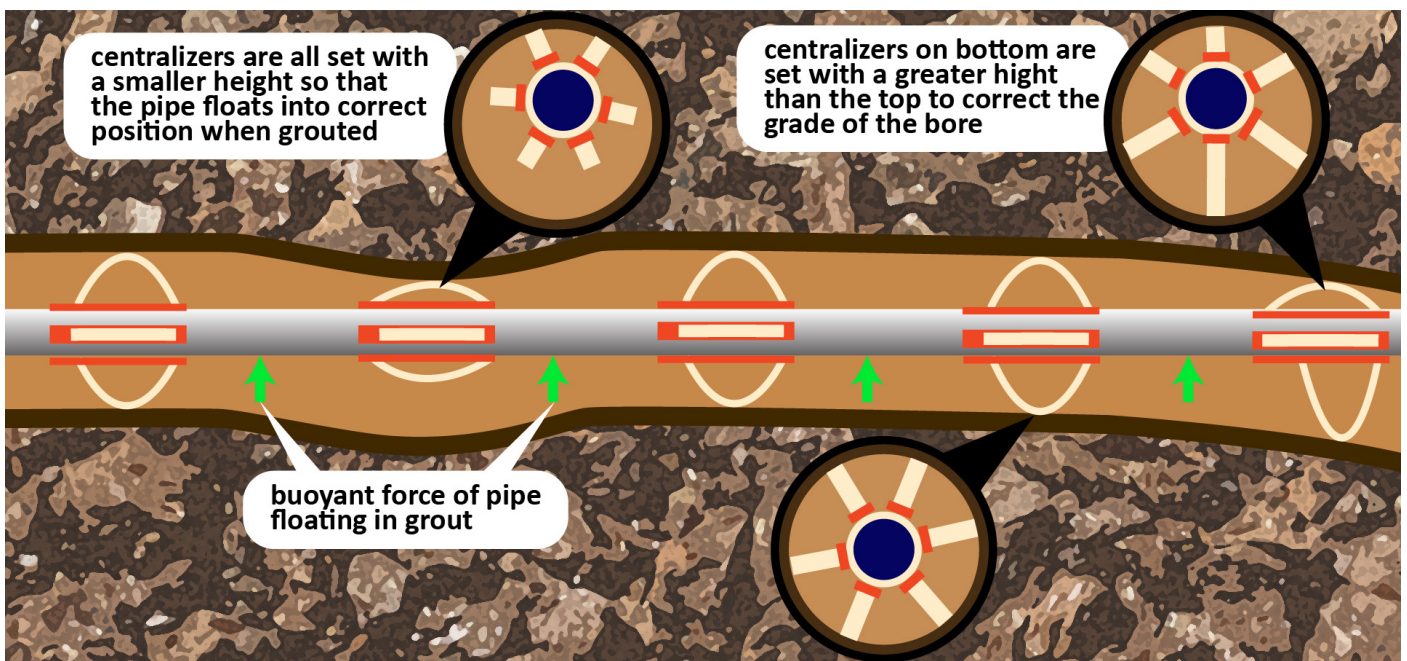


## FEATURES AND PROPERTIES

- Made entirely from inert and durable engineering polymers with low co-efficient of friction which makes pipe installation easier and more efficient by providing a slip lining between the pipe and the bored hole
- Primarily designed for horizontal pipe installations, but easily used in vertical.
- Flexible spring-like design allows for elastic deformation around obstacles, easing the installation process and preventing jamming.
- Adjustable ratchet design allowing for spacers to be instantly customised to fit the requirements of installations and eliminating the need for stocking many different units.
- Integrated very high bond adhesive strips simplifying installation on the pipe and preventing any slippage as well as eliminating the need to pre-wrap or treat the pipe.
- Requires no tools for installation, a jig can be provided to make the ratcheting easier and more efficient.
- Low profile design which allows for grout to flow around them easily which prevents grouting failure.
- Fits Pipes from 100mm diameter with no upper limit. The number of spacers required is solely based on load.

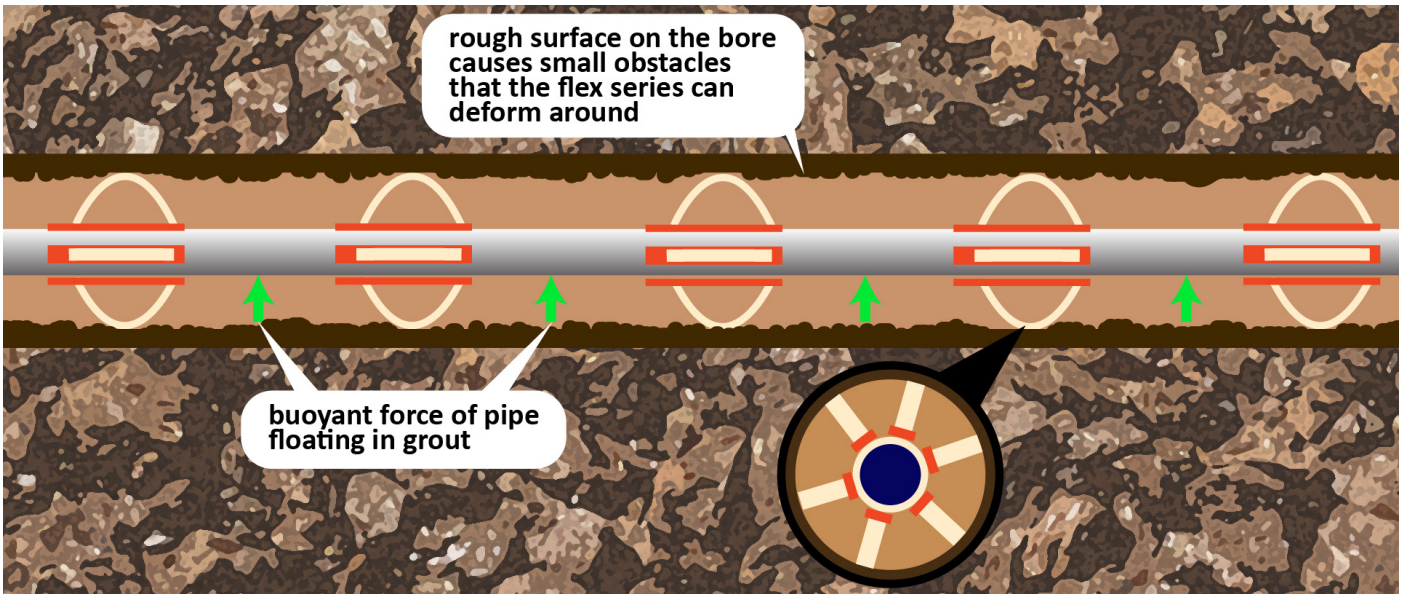


## FIXING PROBLEMS IN DIFFICULT BORES



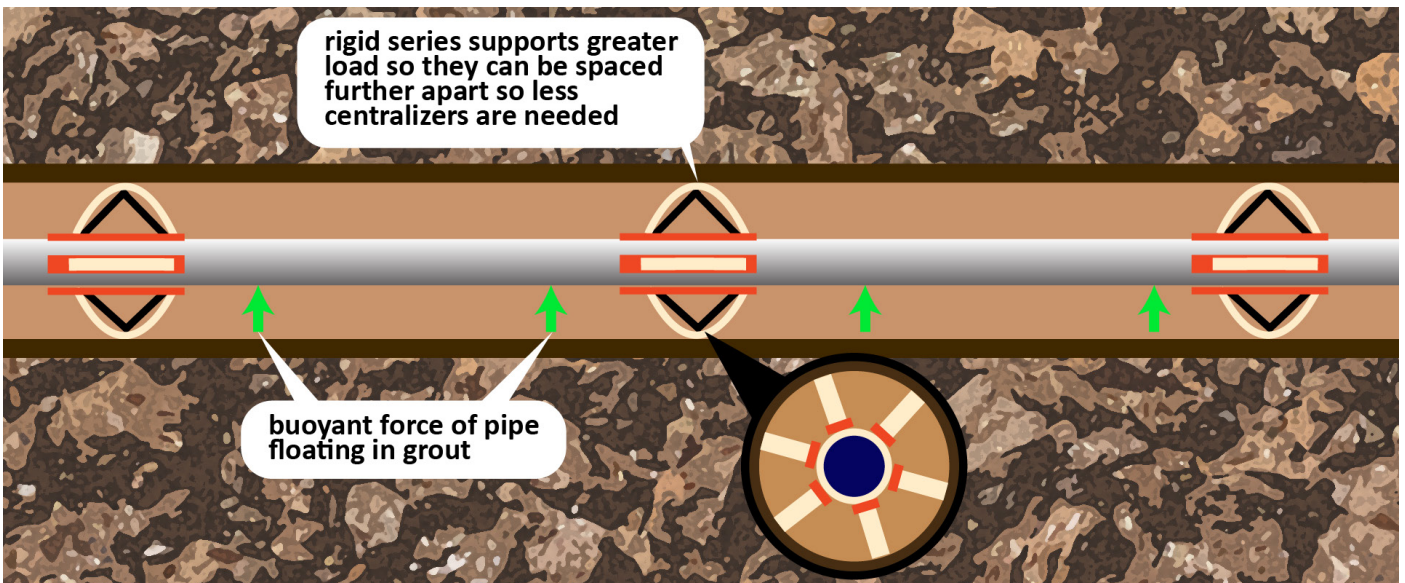
# THE FLEX SERIES

The flex series can flex and deform around obstacles during installation, it is ideal for use in bores that have rough surfaces and in bores with slight misalignments, the flex series will prevent jamming in these problematic cases. The flex series can't support as much load so more of them are needed for installations with high loads.



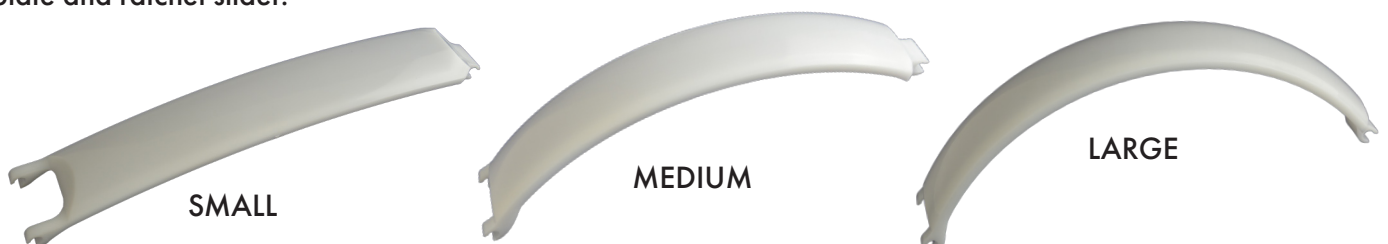
# THE RIGID SERIES

The rigid series has got supports that give it much higher load bearing capability than the flex, this means that the spacers can be positioned further apart which decreases the total amount of spacers needed per installation. The Rigid series can only deflect a small amount when loaded so in rough uneven bores the flex will be better suited.



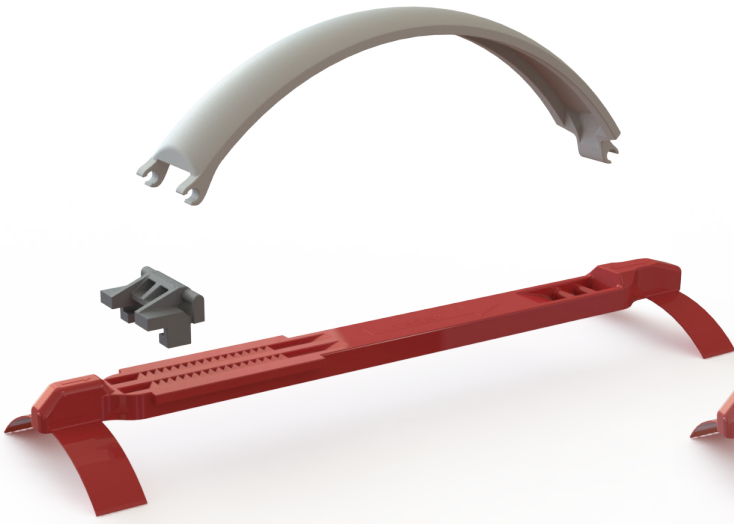
# BAND SIZES

Both the rigid and flex series come in 3 sizes; small, medium and large. The different sizes have the same load rating and are solely to accommodate the full range of height up to 125mm, each size uses the same base plate and ratchet slider.





## FLEX SERIES



## RIGID SERIES



## FLEX DEFORMATION AROUND OBSTACLES



## UNIQUE INDIVIDUAL ATTACHMENT SYSTEM

Riteline spacers incorporate very high adhesion grip pads that give each centralizer a very strong anchor to the pipe. This means that the number of centralizers required is solely determined by the weight of the unfilled pipe in grouted installations and the max weight of the installation (i.e. Pipe full of water) for un-grouted installations. The diameter of the pipe has no effect on the number of centralizers needed as each one is attached individually, and therefore, are not reliant on a series of connected segments to fully support the pipe like other centralizer designs which require more centralizers increasing the cost of the installation.



A jig is used to easily and efficiently set the ratchet mechanism to get the desired height (right)

